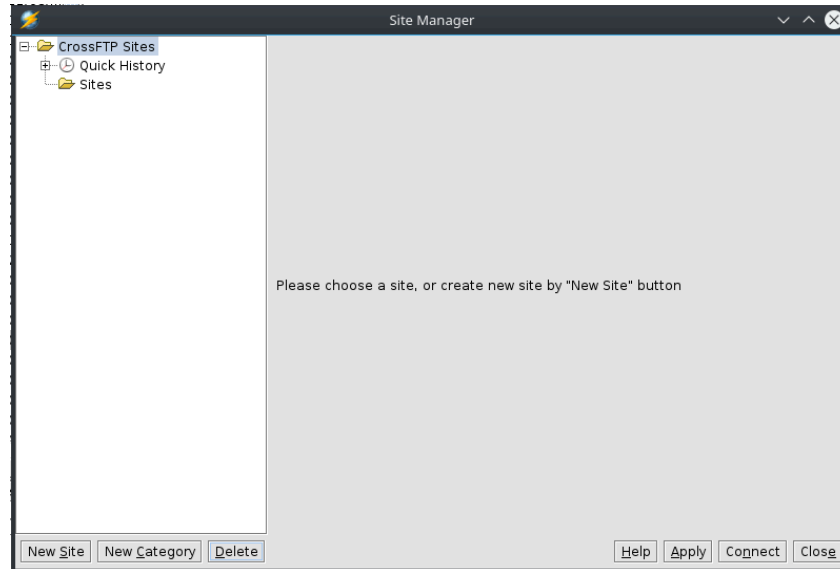


CrossFTP (cross platform, free/freemium)

<http://www.crossftp.com/>

1. Once installed open CrossFTP and select Sites > Site manager



2. Select New site and fill in the following fields:

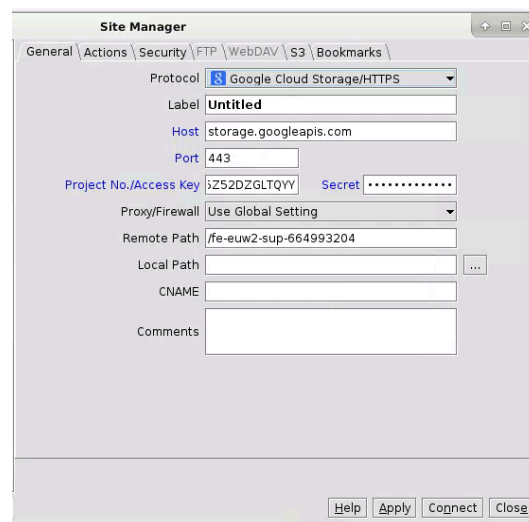
Protocol: Google Cloud Storage/HTTPS

Host: storage.googleapis.com

Access Key: As Provided

Secret: As Provided

Remote Path: As Provided make sure you have /



Transmit (OSX Premium)

<https://panic.com/transmit/>

1. Once installed and opened, select Quick Connect on the right hand side and fill in the details as follows:

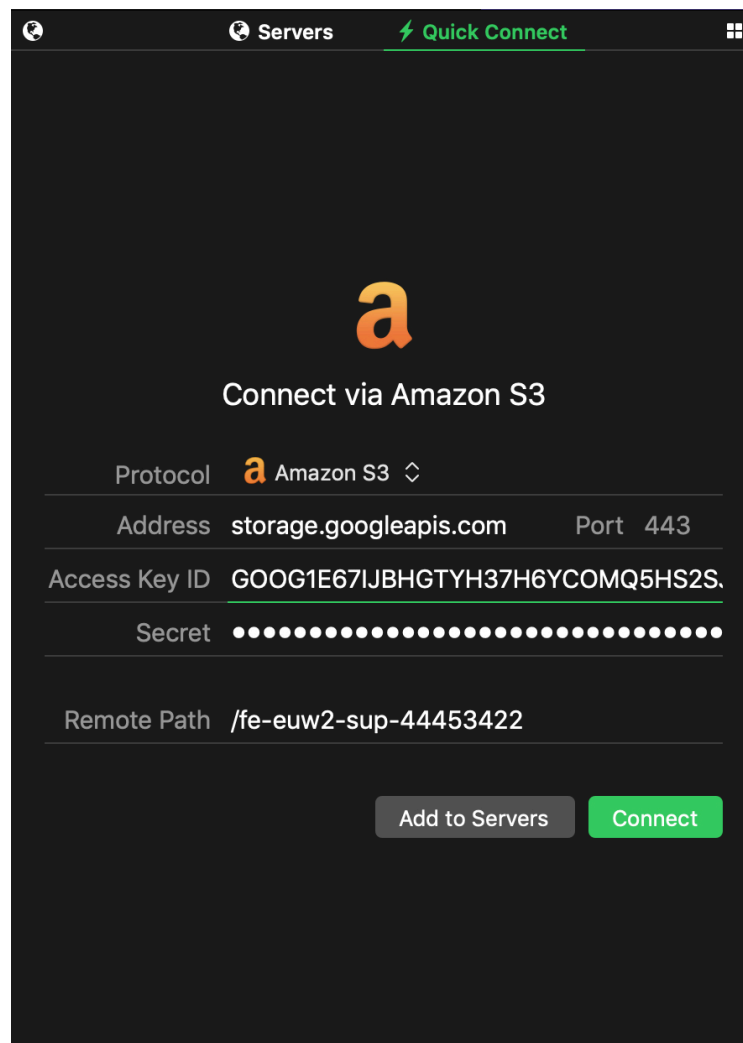
Protocol: Amazon S3

Address: storage.googleapis.com

Access Key ID: As Provided

Secret: As Provided

Remote Path: As Provided



The screenshot shows the 'Quick Connect' window in Transmit. The window title is 'Servers Quick Connect'. The main heading is 'Connect via Amazon S3'. Below this, there are several input fields:

- Protocol:** Amazon S3 (with a dropdown arrow)
- Address:** storage.googleapis.com (with a 'Port 443' label to its right)
- Access Key ID:** GOOG1E671JBHGTYPH37H6YCOMQ5HS2S.
- Secret:** A field filled with 20 dots for masking.
- Remote Path:** /fe-euw2-sup-44453422

At the bottom right, there are two buttons: 'Add to Servers' (disabled) and 'Connect' (active).

Cyberduck (Free software)

<https://cyberduck.io/download/>

1. Once installed and opened, click the bottom left '+' and enter the details as suggested;

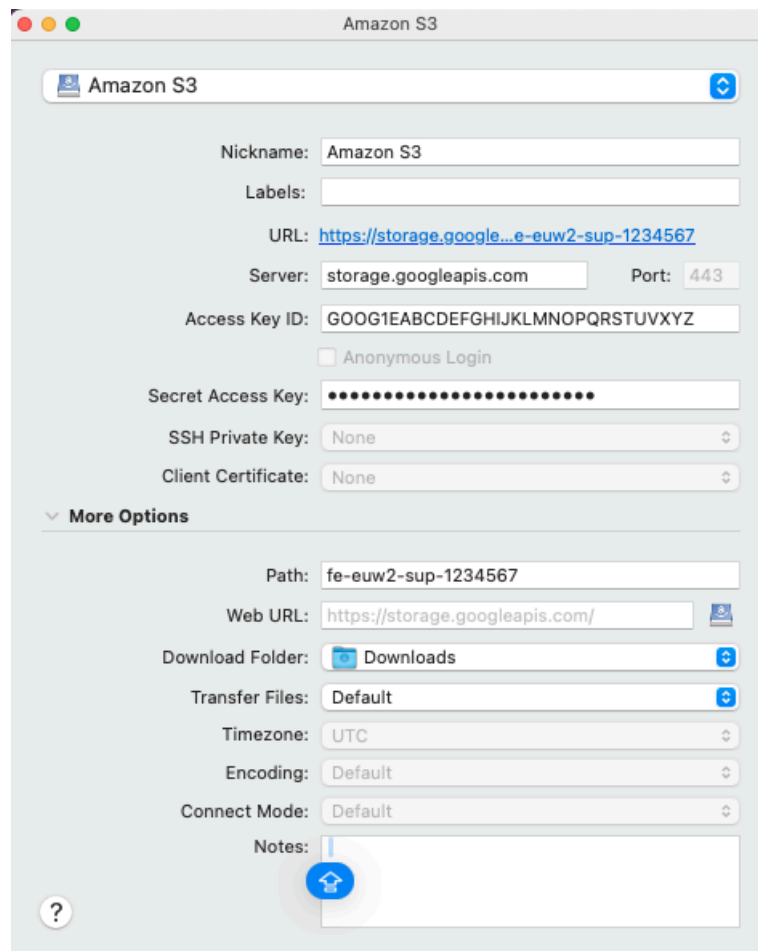
Protocol: Amazon S3

Server: storage.googleapis.com

Access Key ID: As provided

Secret Access Key: As provided

Path: The bucket as provided



The screenshot shows the 'Amazon S3' configuration window in Cyberduck. The window title is 'Amazon S3'. The configuration fields are as follows:

- Nickname: Amazon S3
- Labels: (empty)
- URL: <https://storage.googleapis.com/fe-euw2-sup-1234567>
- Server: storage.googleapis.com
- Port: 443
- Access Key ID: GOOG1EABCDEFGHIJKLMNQPQRSTUVWXYZ
- Anonymous Login
- Secret Access Key: (masked with dots)
- SSH Private Key: None
- Client Certificate: None

Below these fields is a section titled 'More Options' with a dropdown arrow:

- Path: fe-euw2-sup-1234567
- Web URL: <https://storage.googleapis.com/>
- Download Folder: Downloads
- Transfer Files: Default
- Timezone: UTC
- Encoding: Default
- Connect Mode: Default
- Notes: (empty text area)

At the bottom left, there is a question mark icon and a blue circular button with a white house icon.